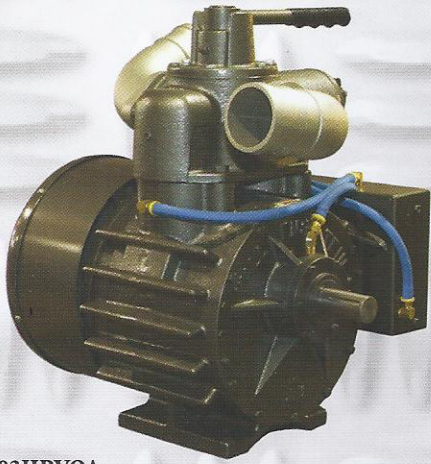
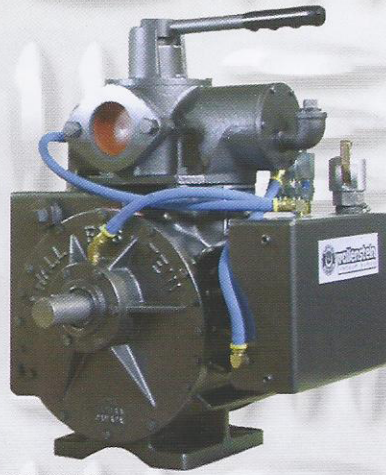


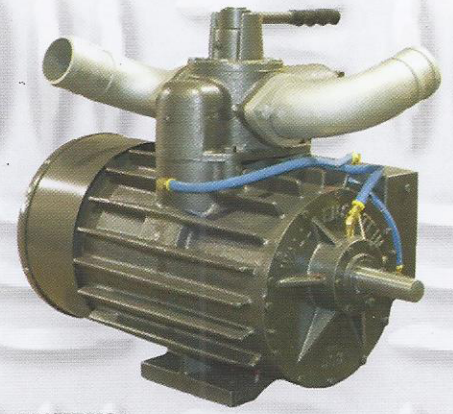
WALLENSTEIN VACUUM PUMPS



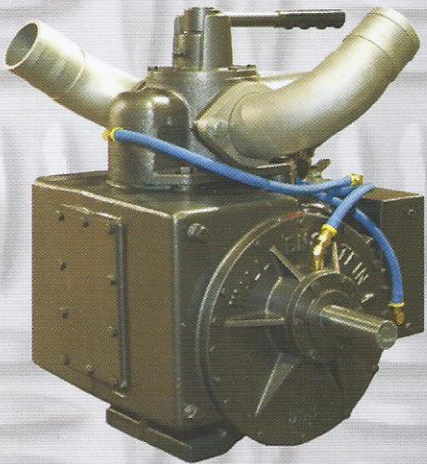
403HRVOA
 COOLING FAN
 CFM - 200@15" Hg @ 1150 RPM
 MAXIMUM VACUUM - 27" Hg
 HP @ FULL VACUUM - 13
 HP @ 15 PSI, 1140 RPM - 18
 PORT SIZE - 3"
 LUBRICATION - 3 SIGHTS
 (AUTOLUBE AVAILABLE)
 1150 RPM - 20" HG CONT
 800 RPM - 24" HG CONT
 WIEGHT 245lbs
 SHAFT - 1 1/4" X 1/4" KEY
 FAN - SHAFT MOUNTED
 VANES - HEAT RESISTANT - 3
 BEARINGS - BALL AND ROLLER



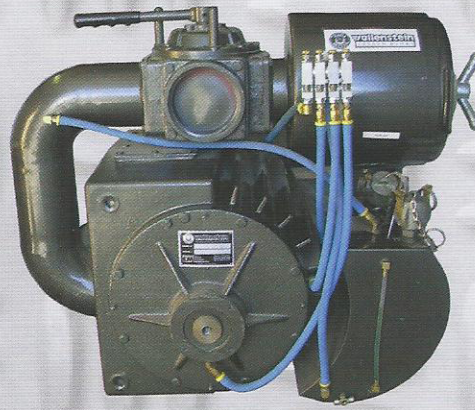
403LNHRVO
 COOLING - LIQUID
 CFM - 200@15" Hg @ 1150 RPM
 MAXIMUM VACUUM - 27" Hg
 HP @ FULL VACUUM - 13
 HP @ 15 PSI, 1140 RPM - 18
 PORT SIZE - 3"
 LUBRICATION - 3 SIGHTS
 (AUTOLUBE AVAILABLE)
 1150 RPM - 22" HG CONT
 800 RPM - 26" HG CONT
 WIEGHT 255lbs
 SHAFT - 1 1/4" X 1/4" KEY
 VANES - HEAT RESISTANT - 3
 BEARINGS - BALL AND ROLLER



753HRVOA
 COOLING FAN
 CFM - 350@15" Hg @ 1150 RPM
 MAXIMUM VACUUM - 27" Hg
 HP @ FULL VACUUM - 23
 HP @ 15 PSI, 1150 RPM - 32
 PORT SIZE - 3"
 LUBRICATION - 3 SIGHTS
 (AUTOLUBE AVAILABLE)
 1150 RPM - 20" HG CONT
 800 RPM - 24" HG CONT
 WIEGHT 340lbs
 SHAFT - 1 1/4" X 1/4" KEY
 FAN - SHAFT MOUNTED
 VANES - HEAT RESISTANT - 3
 BEARINGS - BALL AND ROLLER



753LNHRVO
 COOLING - LIQUID
 CFM - 350@15" Hg @ 1150 RPM
 MAXIMUM VACUUM - 27" Hg
 HP @ FULL VACUUM - 23
 HP @ 15 PSI, 1150 RPM - 32
 PORT SIZE - 3"
 LUBRICATION - 3 SIGHTS
 (AUTOLUBE AVAILABLE)
 1150 RPM - 22" HG CONT
 800 RPM - 26" HG CONT
 WIEGHT 355lbs
 SHAFT - 1 1/4" X 1/4" KEY
 FAN - SHAFT MOUNTED
 VANES - HEAT RESISTANT - 3
 BEARINGS - BALL AND ROLLER



1054LN
 COOLING - LIQUID
 CFM - 500@15" Hg @ 1000 RPM
 MAXIMUM VACUUM - 27" Hg
 HP AT FULL VACUUM - 34
 HP @ 15 PSI - 44
 PUMP PORT SIZE - 4"
 MANIFOLD PORT SIZE - 4"
 LUBRICATION - 4 SIGHTS
 WIEGHT 700lbs
 SHAFT - 1 3/4" KEY
 VANES - HEAT RESISTANT - 5
 BEARINGS - BALL AND ROLLER



1054HRVOA
 COOLING FAN
 CFM - 500@15" Hg @ 1000 RPM
 MAXIMUM VACUUM - 27" Hg
 HP @ FULL VACUUM - 34
 HP @ 15 PSI - 44
 PUMP PORT SIZE - 4"
 MANIFOLD PORT SIZE - 4"
 LUBRICATION - 4 SIGHTS
 WIEGHT 700lbs
 SHAFT - 1 3/4" KEY
 FAN - 2000 CFM, 12V DC
 VANES - HEAT RESISTANT - 5
 BEARINGS - BALL AND ROLLER